

DOOR LOCK

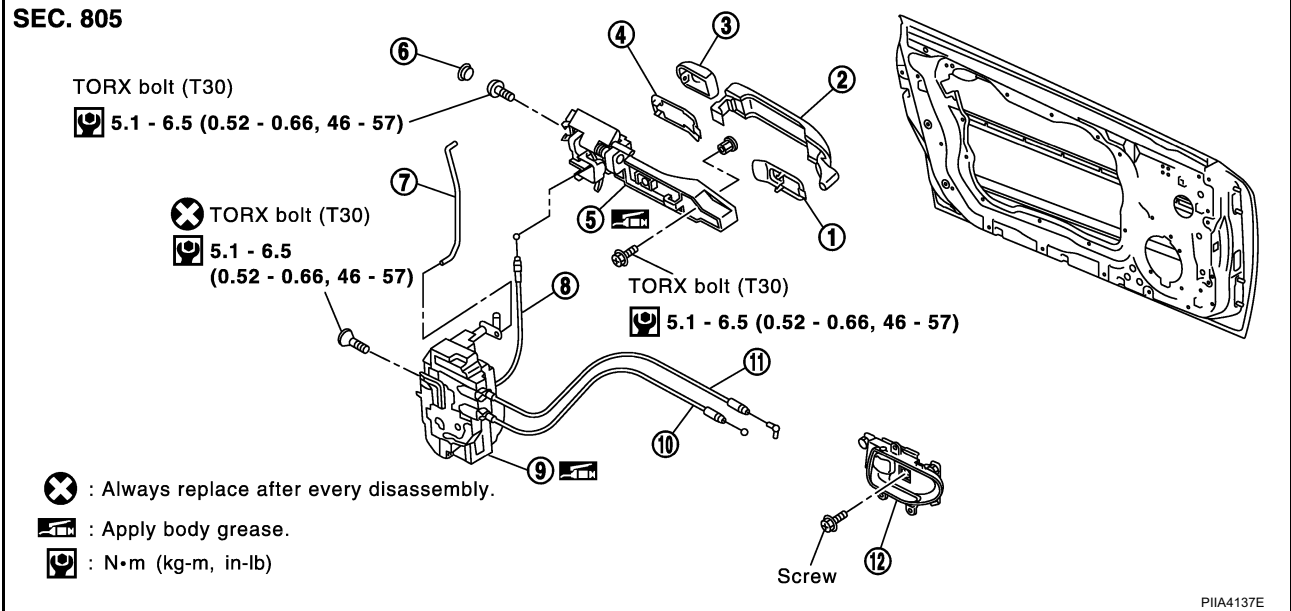
DOOR LOCK

PF80502

Component Structure

AIS0017C

SEC. 805



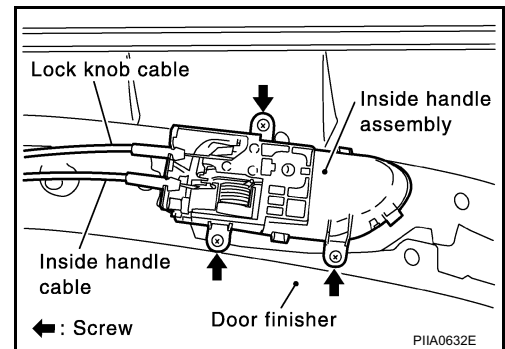
- | | | |
|--|---------------------------|--|
| 1. Front gasket | 2. Outside handle | 3. Door key cylinder (Driver side)
Outside handle escutcheon (passenger side) |
| 4. Rear gasket | 5. Outside handle bracket | 6. grommet |
| 7. Key cylinder rod (Driver side only) | 8. Outside handle cable | 9. Door lock assembly |
| 10. Inside handle knob cable | 11. Lock knob cable | 12. Inside handle |

Removal and Installation

AIS0017E

REMOVAL

1. Remove the front door finisher. Refer to [EI-30, "Removal and Installation"](#).
2. Remove the front door window and front door module assembly. Refer to [GW-54, "Removal and Installation"](#).
3. Disconnect the inside handle cable and lock knob cable from the back side of the front door finisher.



4. Remove door side grommet, and remove door key cylinder assembly (driver side) or outside handle escutcheon (passenger side) bolts (TORX T30) from grommet hole.