

**Classification:**  
EC09-002a

**Reference:**  
ITB09-012a

**Date:**  
March 5, 2010

## EVAP LEAK DTC DIAGNOSIS

This bulletin has been amended. The REPAIR FLOW CHART has been amended. CLAIMS INFORMATION has been added. Please discard all previous copies.

**APPLIED VEHICLES:** 1998 – later Infiniti vehicles with EVAP service port

### SERVICE INFORMATION

If one or more DTCs listed below related to EVAP system leaks is found stored in Self Diagnosis, use the **REPAIR FLOW CHART** starting on Page 6. Use the EVAP system diagram for reference on Page 8.

- DTCs: P0440, P0442, P0455, P0456, P1440, and P1456.
- This Service Procedure can be used in addition to the procedure(s) outlined in the applicable Service Manual, and other bulletins applicable to specific EVAP leak DTCs when necessary.
- If a "Smoke" (Leak Detection) Machine is available and preferred, the **REPAIR FLOW CHART** can still be used. This tool would be used in place of watching for pressure drop and spraying with soapy water. Refer to the Machine's Operator's Manual for proper use.

**CAUTION:** Use Essential Tool J-42909 (sent out to dealers September 1997) or equivalent to pressurize the EVAP system. Do not pressurize over the amount specified in the applicable Service Manual. Do NOT use shop air pressure.

**IMPORTANT NOTE:** If an EVAP system DTC(s) not related to EVAP leaks is/are found stored in Self Diagnosis, this bulletin does not apply. Refer to ASIST and the appropriate Service Manual for diagnostic procedure(s) as needed.

Infiniti Bulletins are intended for use by qualified technicians, not 'do-it-yourselfers'. Qualified technicians are properly trained individuals who have the equipment, tools, safety instruction, and know-how to do a job properly and safely. NOTE: If you believe that a described condition may apply to a particular vehicle, DO NOT assume that it does. See your Infiniti dealer to determine if this applies to your vehicle.

## CLAIMS INFORMATION

The below listed operation codes are provided for **DIAGNOSIS ONLY**.

### For DTC P0455 with NO parts replacement

Submit a Primary Part (PP) type line claim using the following claims coding:

DESCRIPTION	PFP	OP CODE	SYM	DIA	FRT
No EVAP leak found	(1)	EX18AA	(2)	(2)	1.9

- 1) Reference the Parts Information Table and use the applicable "fuel filler cap" Part Number as the Primary Failed Part.
- 2) Use the Symptom and Diagnostic codes that apply to the repair actually performed.

DESCRIPTION	PFP	OP CODE	SYM	DIA	FRT
Leak detected fuel filler cap found loose	(1)	EX60AA	(2)	(2)	1.9

- 1) Reference the Parts Information Table and use the applicable "fuel filler cap" Part Number as the Primary Failed Part.
- 2) Use the Symptom and Diagnostic codes that apply to the repair actually performed.

### For DTC P0455 with parts replacement

Submit a Primary Part (PP) type line claim using the following claims coding:

DESCRIPTION	PFP	OP CODE	SYM	DIA	FRT
Diag Purge Control Valve	(1) (3)	EX19AA	(2)	(2)	1.0

DESCRIPTION	PFP	OP CODE	SYM	DIA	FRT
Diag Vent Control Valve	(1) (3)	EX20AA	(2)	(2)	1.2

DESCRIPTION	PFP	OP CODE	SYM	DIA	FRT
Diag EVAP service port	(1) (3)	EX28AA	(2)	(2)	1.0

DESCRIPTION	PFP	OP CODE	SYM	DIA	FRT
Diag canister or around part	(1) (3)	EX22AA	(2)	(2)	1.5

DESCRIPTION	PFP	OP CODE	SYM	DIA	FRT
Diag failed fuel filler cap	(1) (3)	EX26AA	(2)	(2)	1.3

DESCRIPTION	PFP	OP CODE	SYM	DIA	FRT
Diag fuel pump fitting parts	(1) (3)	EX27AA	(2)	(2)	1.8

DESCRIPTION	PFP	OP CODE	SYM	DIA	FRT
Diag fuel tank and fitting part	(1) (3)	EX23AA	(2)	(2)	6.3

- 1) Refer to the electronic parts catalog (FAST or equivalent) and use the appropriate replaced part number as the primary failed part.
- 2) Use the Symptom and Diagnostic codes that apply to the repair actually performed.
- 3) Use the Warranty Flat Rate manual for operation codes for the actual part replacement.

The below listed operation codes are provided for **DIAGNOSIS ONLY**.

**For DTC P0442 with NO parts replacement**

Submit a Primary Part (PP) type line claim using the following claims coding:

DESCRIPTION	PFP	OP CODE	SYM	DIA	FRT
No EVAP leak found	(1)	EX30AA	(2)	(2)	1.9

- 1) Reference the Parts Information Table and use the applicable "fuel filler cap "Part Number as the Primary Failed Part.
- 2) Use the Symptom and Diagnostic codes that apply to the repair actually performed.

DESCRIPTION	PFP	OP CODE	SYM	DIA	FRT
Leak detected fuel filler cap found loose	(1)	EX31AA	(2)	(2)	1.9

- 1) Reference the Parts Information Table and use the applicable "fuel filler cap "Part Number as the Primary Failed Part.
- 2) Use the Symptom and Diagnostic codes that apply to the repair actually performed.

**For DTC P0442 with parts replacement**

Submit a Primary Part (PP) type line claim using the following claims coding:

DESCRIPTION	PFP	OP CODE	SYM	DIA	FRT
Diag Purge Control Valve	(1) (3)	EX32AA	(2)	(2)	1.0

DESCRIPTION	PFP	OP CODE	SYM	DIA	FRT
Diag Vent Control Valve	(1) (3)	EX33AA	(2)	(2)	1.2

DESCRIPTION	PFP	OP CODE	SYM	DIA	FRT
Diag EVAP service port	(1) (3)	EX34AA	(2)	(2)	1.0

DESCRIPTION	PFP	OP CODE	SYM	DIA	FRT
Diag canister or around part	(1) (3)	EX35AA	(2)	(2)	1.5

DESCRIPTION	PFP	OP CODE	SYM	DIA	FRT
Diag failed fuel filler cap	(1) (3)	EX36AA	(2)	(2)	1.3

DESCRIPTION	PFP	OP CODE	SYM	DIA	FRT
Diag fuel pump fitting parts	(1) (3)	EX37AA	(2)	(2)	1.8

DESCRIPTION	PFP	OP CODE	SYM	DIA	FRT
Diag fuel tank and fitting part	(1) (3)	EX38AA	(2)	(2)	6.3

- 1) Refer to the electronic parts catalog (FAST or equivalent) and use the appropriate replaced part number as the primary failed part.
- 2) Use the Symptom and Diagnostic codes that apply to the repair actually performed.
- 3) Use the Warranty Flat Rate manual for operation codes for the actual part replacement.

The below listed operation codes are provided for **DIAGNOSIS ONLY**.

**For DTC P0456 with NO parts replacement**

Submit a Primary Part (PP) type line claim using the following claims coding:

DESCRIPTION	PFP	OP CODE	SYM	DIA	FRT
No EVAP leak found	(1)	EX40AA	(2)	(2)	1.9

- 1) Reference the Parts Information Table and use the applicable "fuel filler cap "Part Number as the Primary Failed Part.
- 2) Use the Symptom and Diagnostic codes that apply to the repair actually performed.

DESCRIPTION	PFP	OP CODE	SYM	DIA	FRT
Leak detected fuel filler cap found loose	(1)	EX41AA	(2)	(2)	1.9

- 1) Reference the Parts Information Table and use the applicable "fuel filler cap "Part Number as the Primary Failed Part.
- 2) Use the Symptom and Diagnostic codes that apply to the repair actually performed.

**For DTC P0456 with parts replacement**

Submit a Primary Part (PP) type line claim using the following claims coding:

DESCRIPTION	PFP	OP CODE	SYM	DIA	FRT
Diag Purge Control Valve	(1) (3)	EX42AA	(2)	(2)	1.0

DESCRIPTION	PFP	OP CODE	SYM	DIA	FRT
Diag Vent Control Valve	(1) (3)	EX43AA	(2)	(2)	1.2

DESCRIPTION	PFP	OP CODE	SYM	DIA	FRT
Diag EVAP service port	(1) (3)	EX44AA	(2)	(2)	1.0

DESCRIPTION	PFP	OP CODE	SYM	DIA	FRT
Diag canister or around part	(1) (3)	EX45AA	(2)	(2)	1.5

DESCRIPTION	PFP	OP CODE	SYM	DIA	FRT
Diag failed fuel filler cap	(1) (3)	EX46AA	(2)	(2)	1.3

DESCRIPTION	PFP	OP CODE	SYM	DIA	FRT
Diag fuel pump fitting parts	(1) (3)	EX47AA	(2)	(2)	1.8

DESCRIPTION	PFP	OP CODE	SYM	DIA	FRT
Diag fuel tank and fitting part	(1) (3)	EX48AA	(2)	(2)	6.3

- 1) Refer to the electronic parts catalog (FAST or equivalent) and use the appropriate replaced part number as the primary failed part.
- 2) Use the Symptom and Diagnostic codes that apply to the repair actually performed.
- 3) Use the Warranty Flat Rate manual for operation codes for the actual part replacement.

The below listed operation codes are provided for **DIAGNOSIS ONLY**.

**For all other EVAP related DTCs with NO parts replacement**

Submit a Primary Part (PP) type line claim using the following claims coding:

DESCRIPTION	PFP	OP CODE	SYM	DIA	FRT
No EVAP leak found	(1)	EX50AA	(2)	(2)	1.9

- 1) Reference the Parts Information Table and use the applicable "fuel filler cap "Part Number as the Primary Failed Part.
- 2) Use the Symptom and Diagnostic codes that apply to the repair actually performed.

DESCRIPTION	PFP	OP CODE	SYM	DIA	FRT
Leak detected fuel filler cap found loose	(1)	EX51AA	(2)	(2)	1.9

- 1) Reference the Parts Information Table and use the applicable "fuel filler cap "Part Number as the Primary Failed Part.
- 2) Use the Symptom and Diagnostic codes that apply to the repair actually performed.

**For all other EVAP related DTCs with parts replacement**

Submit a Primary Part (PP) type line claim using the following claims coding:

DESCRIPTION	PFP	OP CODE	SYM	DIA	FRT
Diag Purge Control Valve	(1) (3)	EX52AA	(2)	(2)	1.0

DESCRIPTION	PFP	OP CODE	SYM	DIA	FRT
Diag Vent Control Valve	(1) (3)	EX53AA	(2)	(2)	1.2

DESCRIPTION	PFP	OP CODE	SYM	DIA	FRT
Diag EVAP service port	(1) (3)	EX54AA	(2)	(2)	1.0

DESCRIPTION	PFP	OP CODE	SYM	DIA	FRT
Diag canister or around part	(1) (3)	EX55AA	(2)	(2)	1.5

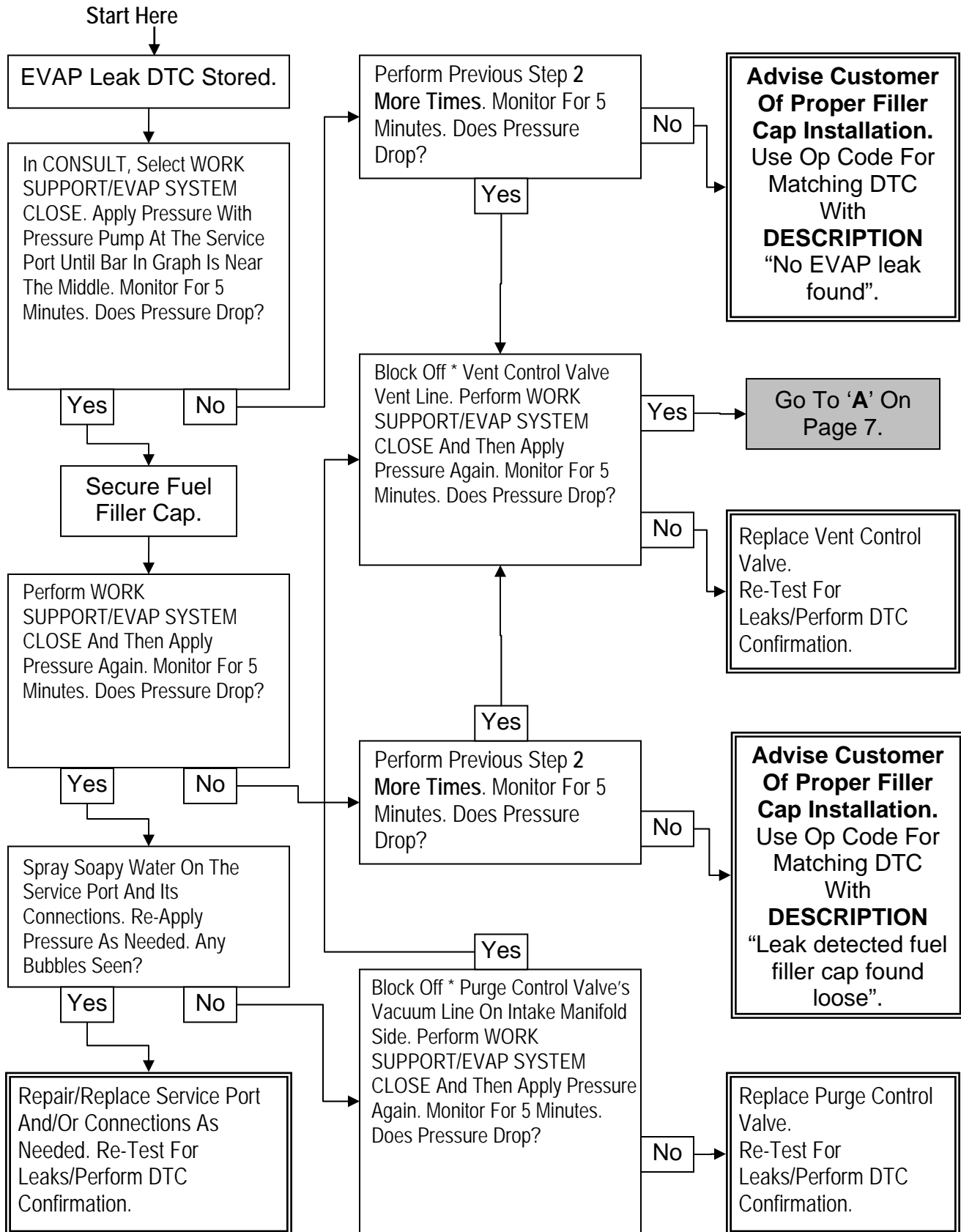
DESCRIPTION	PFP	OP CODE	SYM	DIA	FRT
Diag failed fuel filler cap	(1) (3)	EX56AA	(2)	(2)	1.3

DESCRIPTION	PFP	OP CODE	SYM	DIA	FRT
Diag fuel pump fitting parts	(1) (3)	EX57AA	(2)	(2)	1.8

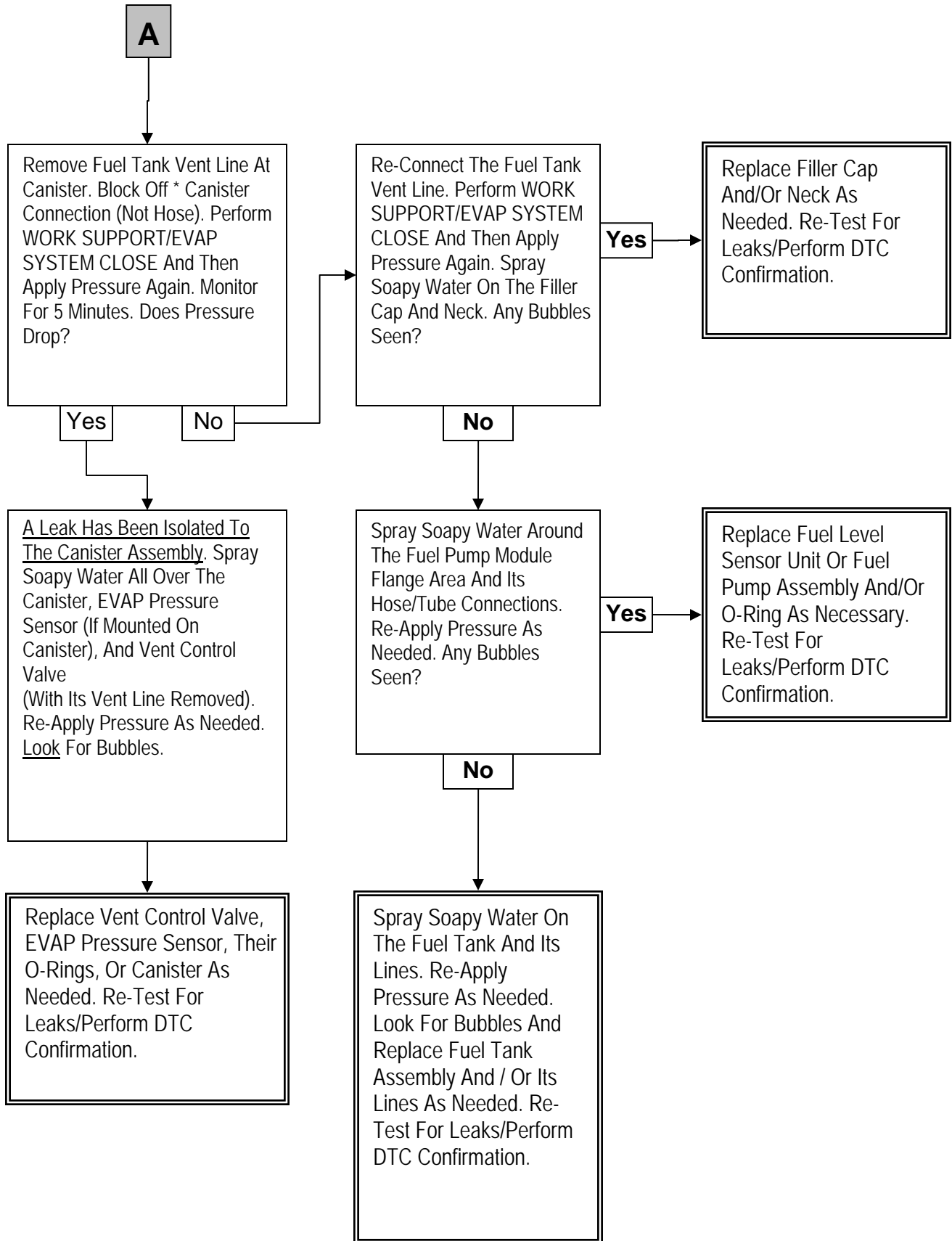
DESCRIPTION	PFP	OP CODE	SYM	DIA	FRT
Diag fuel tank and fitting part	(1) (3)	EX58AA	(2)	(2)	6.3

- 1) Refer to the electronic parts catalog (FAST or equivalent) and use the appropriate replaced part number as the primary failed part.
- 2) Use the Symptom and Diagnostic codes that apply to the repair actually performed.
- 3) Use the Warranty Flat Rate manual for operation codes for the actual part replacement.

## REPAIR FLOW CHART



\* Pinch off or plug line as appropriate.



\* Pinch off or plug line as appropriate.

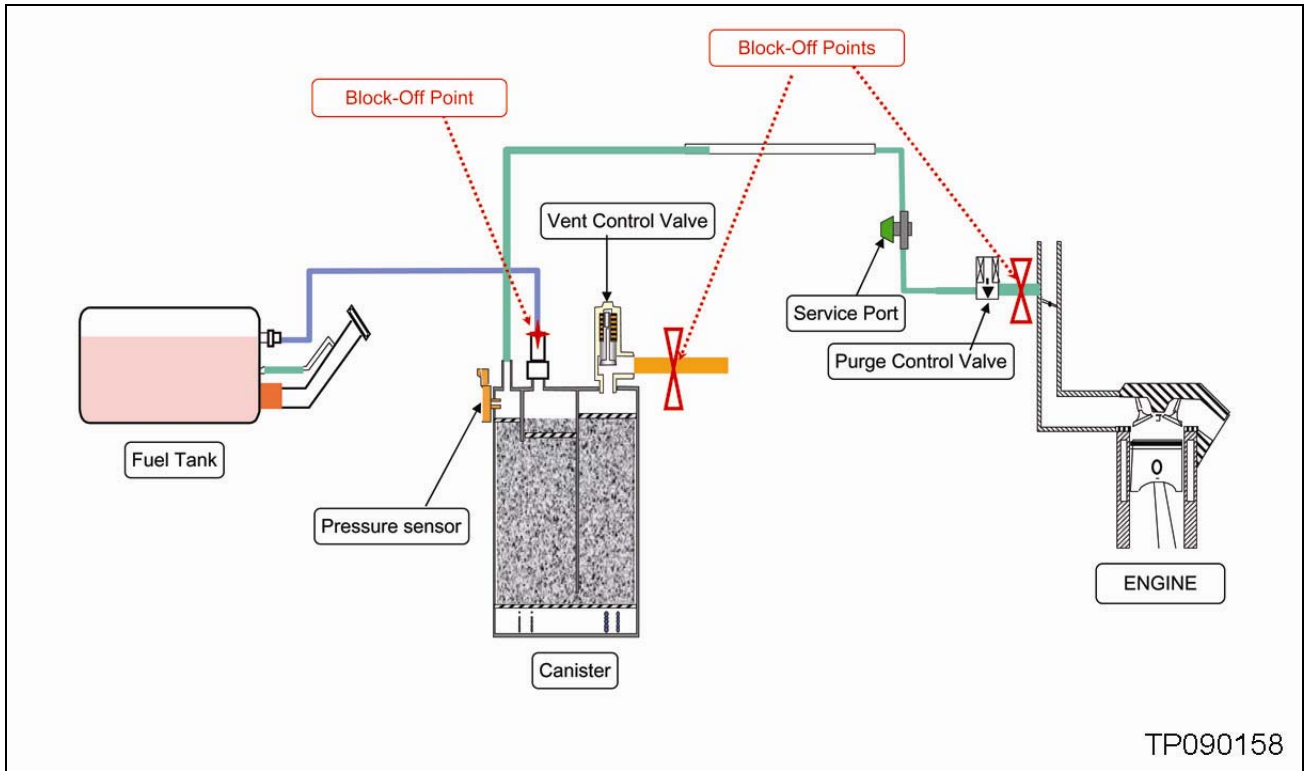


Diagram of typical EVAP system

