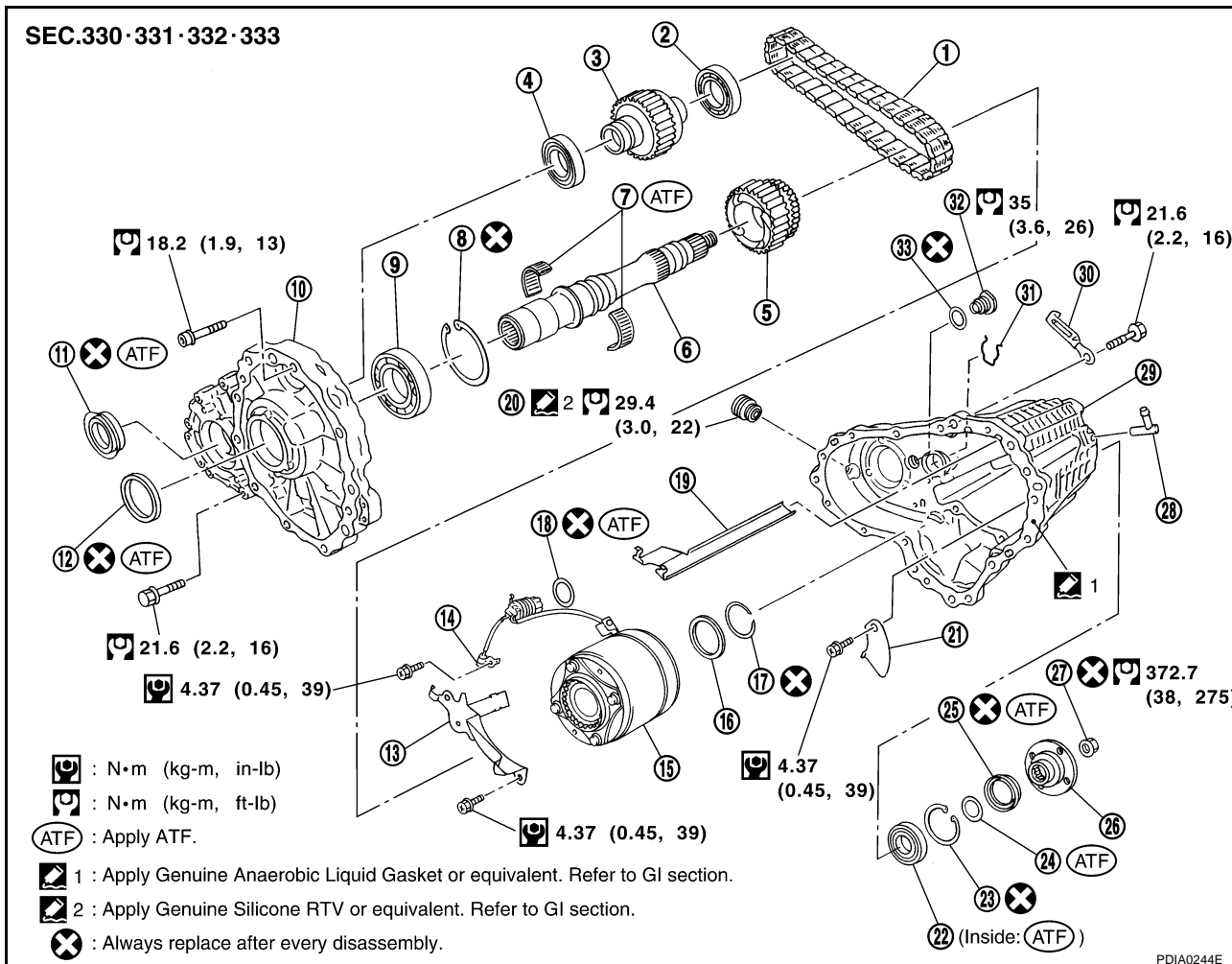


# TRANSFER ASSEMBLY

ND/S0003G

## Disassembly and Assembly COMPONENTS

A  
B  
C  
TF  
E  
F  
G  
H  
I  
J  
K  
L  
M



- |                                    |                                   |                                  |
|------------------------------------|-----------------------------------|----------------------------------|
| 1. Drive chain                     | 2. Front drive shaft rear bearing | 3. Front drive shaft             |
| 4. Front drive shaft front bearing | 5. Sprocket                       | 6. Mainshaft                     |
| 7. Needle bearing                  | 8. Snap ring                      | 9. Mainshaft bearing             |
| 10. Front case                     | 11. Front oil seal                | 12. Mainshaft oil seal           |
| 13. Oil cover                      | 14. Temperature sensor            | 15. Electric controlled coupling |
| 16. Spacer                         | 17. Snap ring                     | 18. O-ring                       |
| 19. Oil gutter                     | 20. Drain plug                    | 21. Baffle plate                 |
| 22. Rear bearing                   | 23. Snap ring                     | 24. Spacer                       |
| 25. Rear oil seal                  | 26. Companion flange              | 27. Self-lock nut                |
| 28. Breather tube                  | 29. Rear case                     | 30. Harness bracket              |
| 31. Retainer                       | 32. Filler plug                   | 33. Gasket                       |