

Classification:
 BT07-014a

Reference:
 ITB07-032a

Date:
 December 4, 2007

G35 SEDAN / COUPE, FX, AND M; SUNROOF LID SEAL

**This bulletin amends ITB07-032. Amended Applied Vehicles.
Please discard all previous versions of this bulletin.**

APPLIED VEHICLE(S): 2005 - 2008 G35 Sedan (V35 and V36)
 2005 - 2007 G35 Coupe (CV35)
 2005 - 2008 FX (S50)
 2006 - 2008 M45 (Y50)

IF YOU CONFIRM

The sunroof lid seal is not sealing correctly.

ACTIONS

1. Make sure the sunroof glass rubber edge is in good condition.
2. If the rubber edge is in good condition, replace the sunroof lid seal with the new one listed in Parts Information.

PARTS INFORMATION

Description	Model	PART #	Quantity
Sunroof Lid Seal	S50	91246-9W01A	1
Sunroof Lid Seal	V35	91246-AL51A	1
Sunroof Lid Seal	V36	91246-JK01A	1
Sunroof Lid Seal	CV35	91246-AM81A	1
Sunroof Lid Seal	Y50	91246-EG01A	1

CLAIMS INFORMATION

Submit a Primary Part (PP) type line claim using the following claims coding:

DESCRIPTION	PFP	OP CODE	SYM	DIA	FRT
RPL Sunroof Lid Seal	(1)	UQ12AA	ZE	32	(2)

- (1) Reference the Parts Information Table and use the applicable Sunroof Lid Seal P/N as the PFP.
- (2) Reference the current Infiniti Warranty Flat Rate Manual and use the indicated FRT.

IMPORTANT: The purpose of "ACTIONS" (above) is to give you a quick idea of the work you will be performing. You **MUST** closely follow the entire Service Procedure (starting on page 2) as it contains information that is essential to successfully completing the repair.

Infiniti Bulletins are intended for use by qualified technicians, not 'do-it-yourselfers'. Qualified technicians are properly trained individuals who have the equipment, tools, safety instruction, and know-how to do a job properly and safely. NOTE: If you believe that a described condition may apply to a particular vehicle, DO NOT assume that it does. See your Infiniti dealer to determine if this applies to your vehicle.

SERVICE PROCEDURE

1. Remove the sunroof lid assembly.
 - Refer to section RF in the Service Manual.
2. Check the sunroof glass rubber edge (see Figure 1).

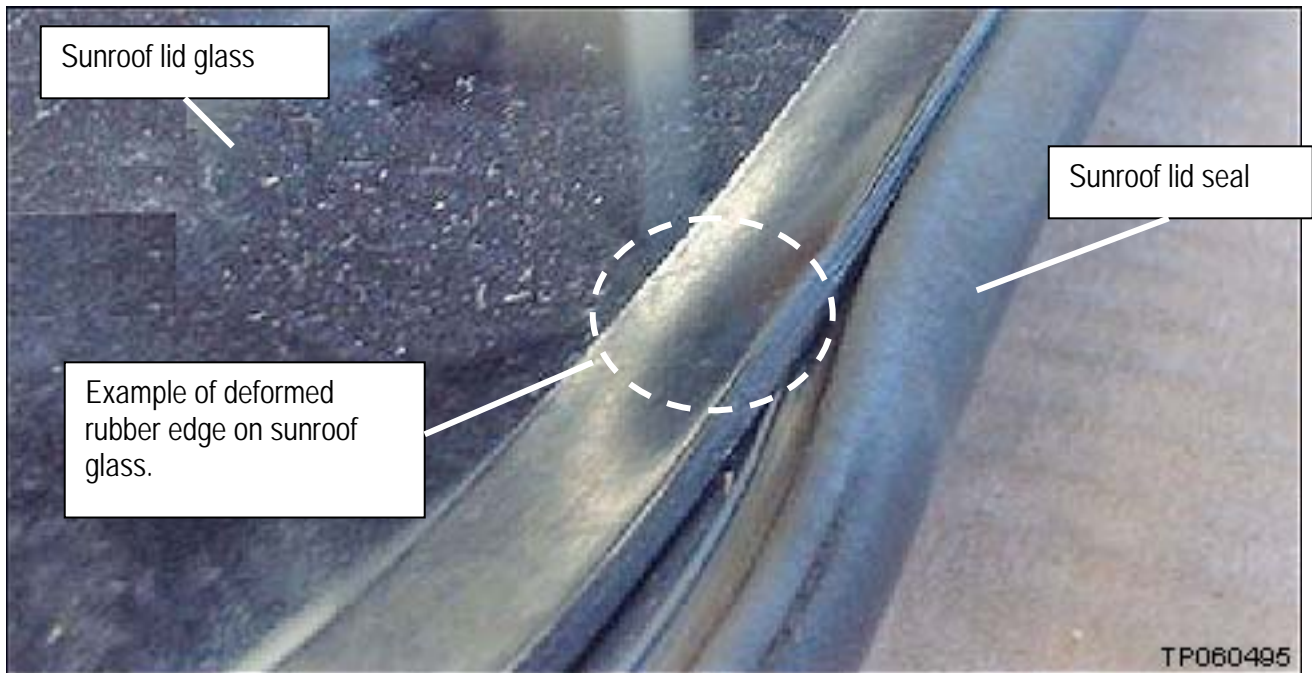


Figure 1

- If the rubber edge is deformed or damaged (see Figure 1 for example), **this bulletin does not apply**. The entire sunroof lid assembly must be replaced.
- If the rubber edge is in good condition, continue with this procedure.

3. Remove the old sunroof lid seal.

- Just pull it off.



Figure 2

4. Install the new seal.

- Stretch the seal around the sunroof lid.
- Push the seal into the “ditch” (channel).
- Make sure the seal is pushed all the way into the ditch—no lifted areas.



Figure 3

NOTE: If needed, very light taps with a rubber hammer can be used to press the seal into the “ditch”.

5. Reinstall the sunroof lid into the vehicle. Make sure the sunroof operates correctly and seals correctly.

