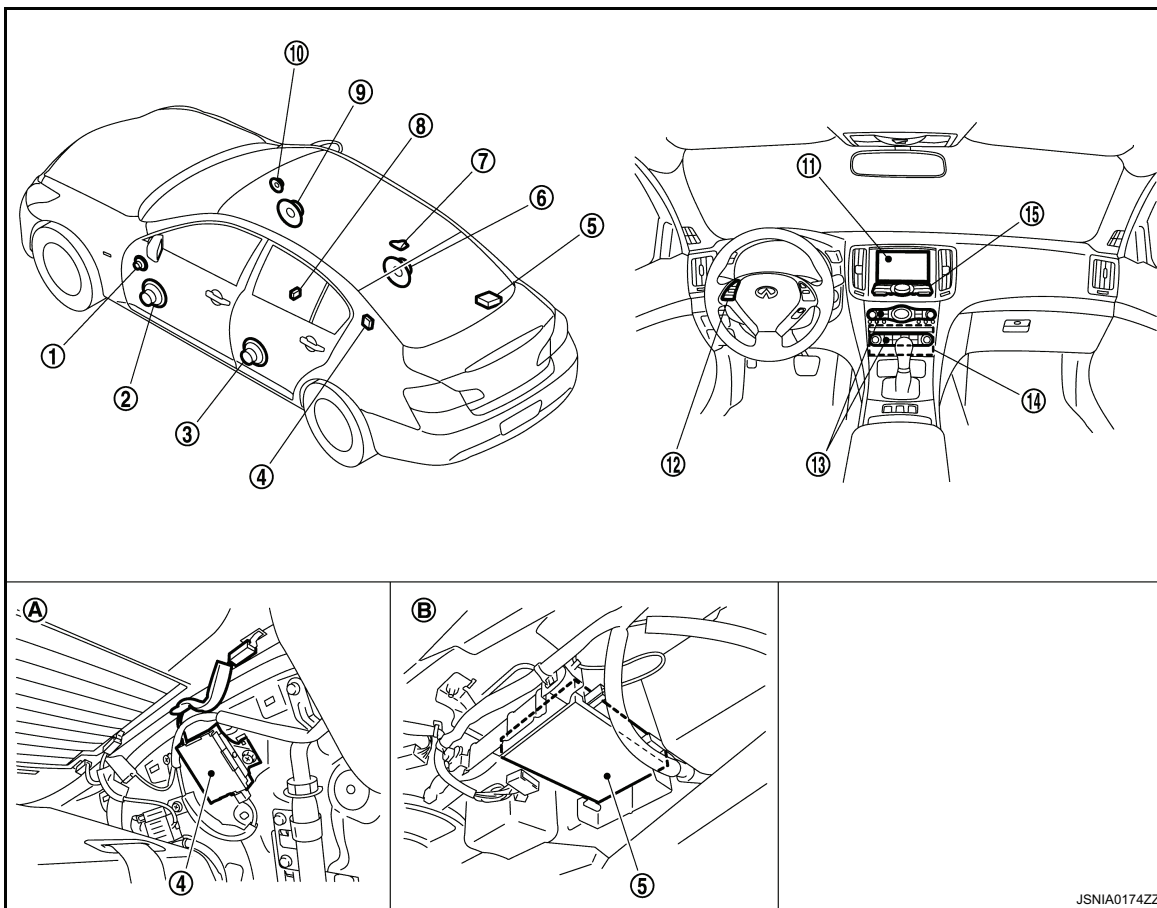


MULTI AV SYSTEM

< FUNCTION DIAGNOSIS >

[BASE AUDIO WITHOUT NAVIGATION]



- | | | |
|-----------------------------------|---|--------------------------|
| 1. Tweeter LH | 2. Front door speaker LH | 3. Rear door speaker LH |
| 4. Antenna amp. | 5. Satellite radio tuner | 6. Rear door speaker RH |
| 7. Satellite radio antenna | 8. Auxiliary input jacks | 9. Front door speaker RH |
| 10. Tweeter RH | 11. Display unit | 12. Steering switch |
| 13. Preset switch | 14. AV control unit | 15. Multifunction switch |
| A. Within rear pillar finisher LH | B. Rear parcel shelf lower part (left side) | |

Component Description

INFOID:000000000964523

| Part name | Description |
|--------------------|--|
| AV CONTORL UNIT | <ul style="list-style-type: none"> It is the master unit of the MULTI AV system, and it is connected to each control unit by means of communication. It operates each system according to communication signals from the AV control unit. AV control unit includes audio function and vehicle information function. It is connected to ECM and unified meter and A/C amp via CAN communication to obtain necessary information for the vehicle information function. It inputs the automatic brightness ON/OFF signals that are required for the display dimming control. It inputs the signals for driving status recognition (vehicle speed, reverse and parking brake). Auxiliary image signal is input from the auxiliary input jacks. |
| DISPLAY UNIT | <ul style="list-style-type: none"> Display image is controlled by the serial communication from AV control unit. RGB image signal is input from AV control unit (RGB, RGB area and RGB synchronizing). Synchronize signal (HP, VP) is output to AV control unit. Auxiliary image signal is input from the AV control unit. |
| FRONT DOOR SPEAKER | <ul style="list-style-type: none"> Outputs sound signal from AV control unit. Outputs high, mid and low range sounds. |