

# FRONT DISC BRAKE

## < ON-VEHICLE REPAIR >

### Cylinder Body

Check the inner wall of the cylinder for rust, wear, cracks or damage. Replace the cylinder if any abnormal condition is detected.

#### **CAUTION:**

**Always clean with new brake fluid. Never clean with mineral oil such as gasoline and light oil.**

### Torque Member

- Check the torque member for wear, cracks or damage. Replace the torque member if any abnormal condition is detected.
- Eliminate rust on the torque member. Replace them if rust is excessively attached.

### Piston

Check the surface of the piston for rust, wear, cracks or damage. Replace the piston if any abnormal condition is detected.

#### **CAUTION:**

**A piston sliding surface is plated. Never polish with sandpaper.**

### Location Pin, Protector and Bushing

Check the location pin, protector and bushing for rust, wear, cracks or damage. Replace the parts if any abnormal condition is detected.

### Sliding Pin and Sliding Pin Boot

Check the sliding pin and sliding boots for rust, wear, cracks or damage. Replace the parts if any abnormal condition is detected.

## ADJUSTMENT AFTER INSTALLATION

### Brake Burnishing Procedure

Burnish contact surfaces between disc rotors and pads according to following procedure after refinishing or replacing disc rotor, or if a soft pedal occurs at very low mileage.

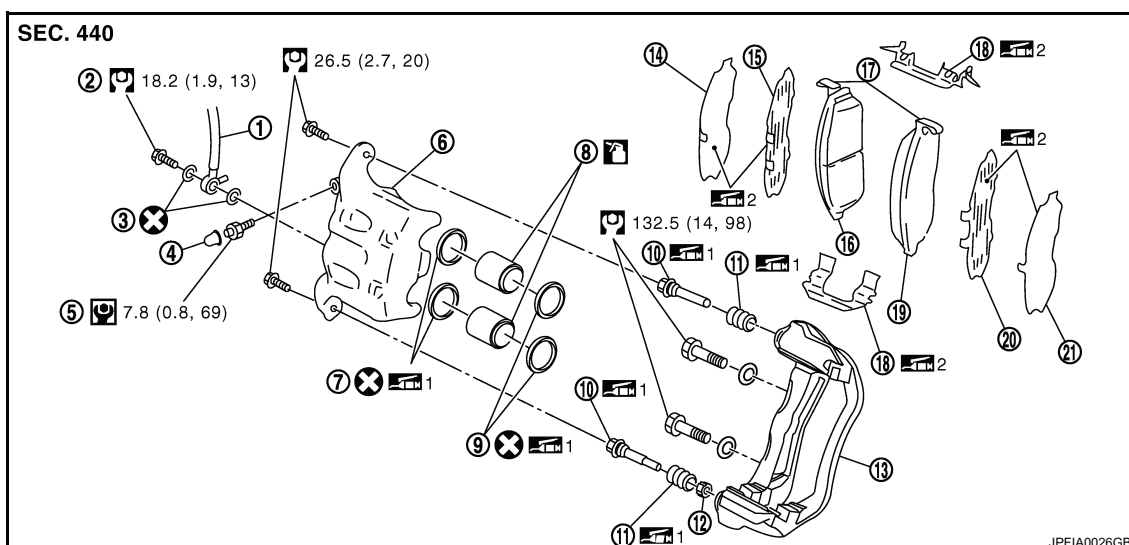
#### **CAUTION:**

- **Be careful of vehicle speed because the brake does not operate easily until pad and disc rotor are securely fitted.**
  - **Only perform this procedure under safe road and traffic conditions. Use extreme caution.**
1. Drive vehicle on straight, flat road.
  2. Depress brake pedal with the power to stop vehicle within 3 to 5 seconds until the vehicle stops.
  3. Drive without depressing brake for a few minutes to cool the brake.
  4. Repeat steps 1 to 3 until pad and disc rotor are securely fitted.

## BRAKE CALIPER ASSEMBLY (2 PISTON TYPE)

### BRAKE CALIPER ASSEMBLY (2 PISTON TYPE) : Exploded View


INFOID:000000000958457





## FRONT DISC BRAKE

### < ON-VEHICLE REPAIR >

- |                   |                      |                      |
|-------------------|----------------------|----------------------|
| 1. Brake hose     | 2. Union bolt        | 3. Copper washer     |
| 4. Cap            | 5. Bleeder valve     | 6. Cylinder body     |
| 7. Piston seal    | 8. Piston            | 9. Piston boot       |
| 10. Sliding pin   | 11. Sliding pin boot | 12. Bushing          |
| 13. Torque member | 14. Inner shim cover | 15. Inner shim       |
| 16. Inner pad     | 17. Pad wear sensor  | 18. Pad retainer     |
| 19. Outer pad     | 20. Outer shim       | 21. Outer shim cover |

 1: Apply rubber grease.

 2: Apply copper based brake grease.

 : Apply brake fluid.

Refer to [GI-4, "Components"](#) for symbols not described on the above.

### BRAKE CALIPER ASSEMBLY (2 PISTON TYPE) : Removal and Installation

INFOID:000000000958458

#### REMOVAL

##### **WARNING:**

Clean any dust from the brake caliper and brake pads with a vacuum dust collector. Never blow with compressed air.

##### **CAUTION:**

Never depress the brake pedal. Brake fluid may splash while removing the brake hose.

1. Remove tires with power tool.
2. Fix the disc rotor using wheel nuts.
3. Drain brake fluid. Refer to [BR-11, "Draining"](#).

##### **CAUTION:**

Never spill or splash brake fluid on the disc rotor.

4. Remove union bolt, and then disconnect brake hose from caliper assembly.
5. Remove torque member mounting bolts, and remove brake caliper assembly.

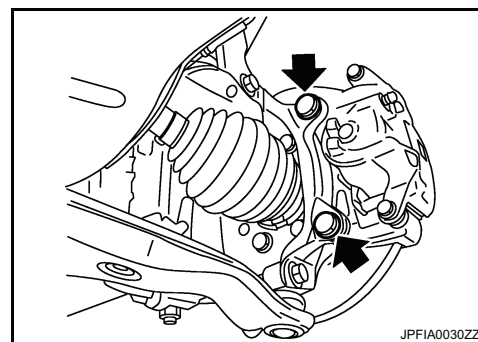
##### **CAUTION:**

Never drop brake pad and caliper assembly.

6. Remove disc rotor.

##### **CAUTION:**

- Put matching marks on the wheel hub and bearing assembly and the disc rotor before removing the disc rotor.
- Never drop disc rotor.



#### INSTALLATION

##### **WARNING:**

Clean any dust from the brake caliper and brake pads with a vacuum dust collector. Never blow with compressed air.

##### **CAUTION:**

Never depress the brake pedal. Brake fluid may splash while removing the brake hose.

1. Install disc rotor.

##### **CAUTION:**

Align the matching marks that have been made during removal when reusing the disc rotor.

2. Install the brake caliper assembly to the vehicle and tighten the torque member mounting bolts to the specified torque.

##### **CAUTION:**

Never spill or splash any grease and moisture on the brake caliper assembly mounting face, threads, mounting bolts and washers. Wipe out any grease and moisture.

3. Install brake hose to brake caliper assembly, and tighten union bolts to the specified torque.