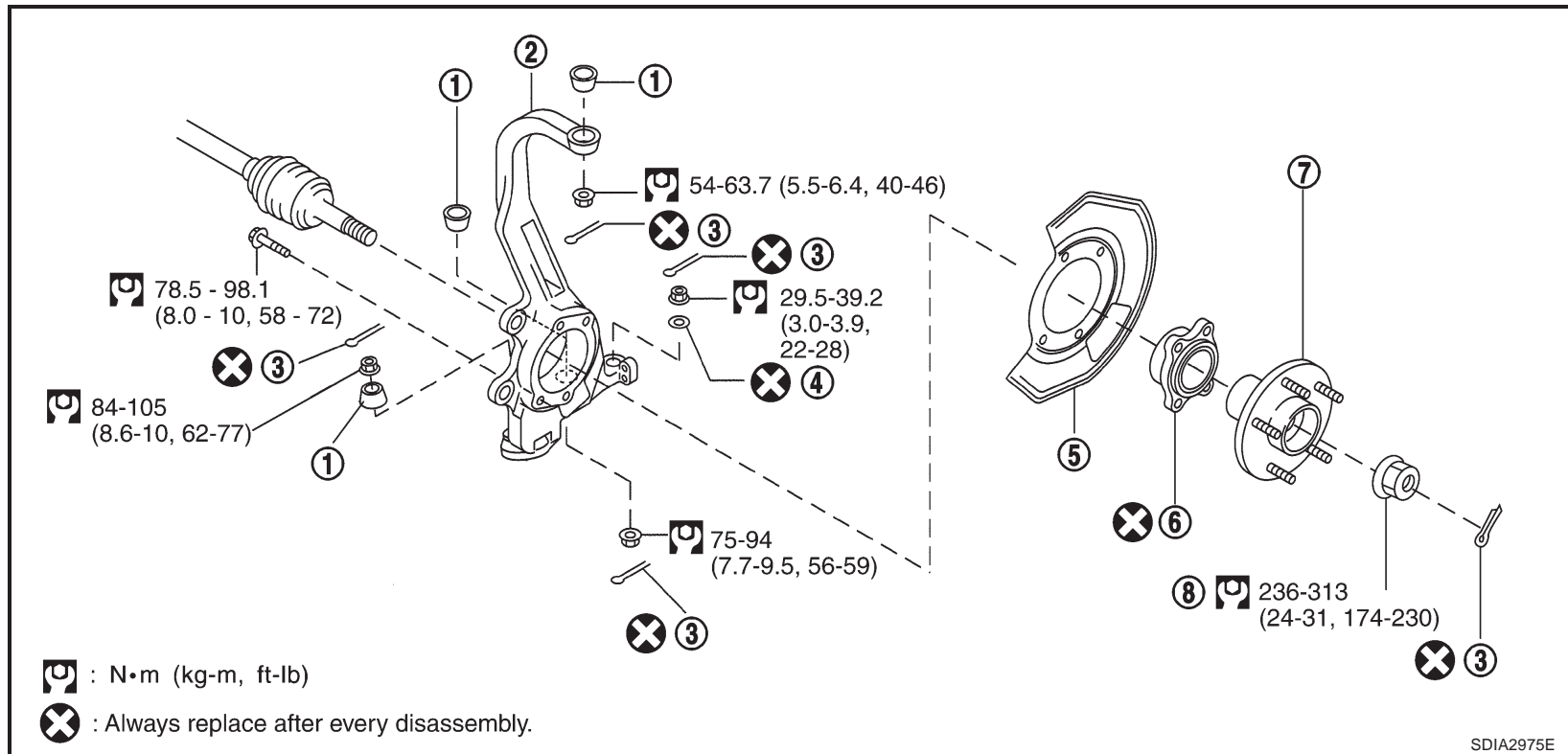


Axial end play : 0.05 mm (0.002 in) or less

- Rotate wheel hub and make sure there is no unusual noise or other irregular conditions. If there are any irregular conditions, replace wheel bearings.

## Removal and Installation

NDS00058



- |              |                           |                  |
|--------------|---------------------------|------------------|
| 1. Ball seat | 2. Steering knuckle       | 3. Cotter pin    |
| 4. Washer    | 5. Splash guard           | 6. Wheel bearing |
| 7. Wheel hub | 8. Wheel bearing lock nut |                  |

### REMOVAL

1. Remove tire from vehicle with power tool.
2. Remove undercover with power tool.
3. Remove brake caliper with power tool. Hang it in a place where it will not interfere with work. Refer to [BR-25, "FRONT DISC BRAKE"](#).

#### NOTE:

Avoid depressing brake pedal while brake caliper is removed.

4. Remove disc rotor.
5. Remove wheel sensor from steering knuckle. Refer to [BRC-59, "WHEEL SENSOR"](#).